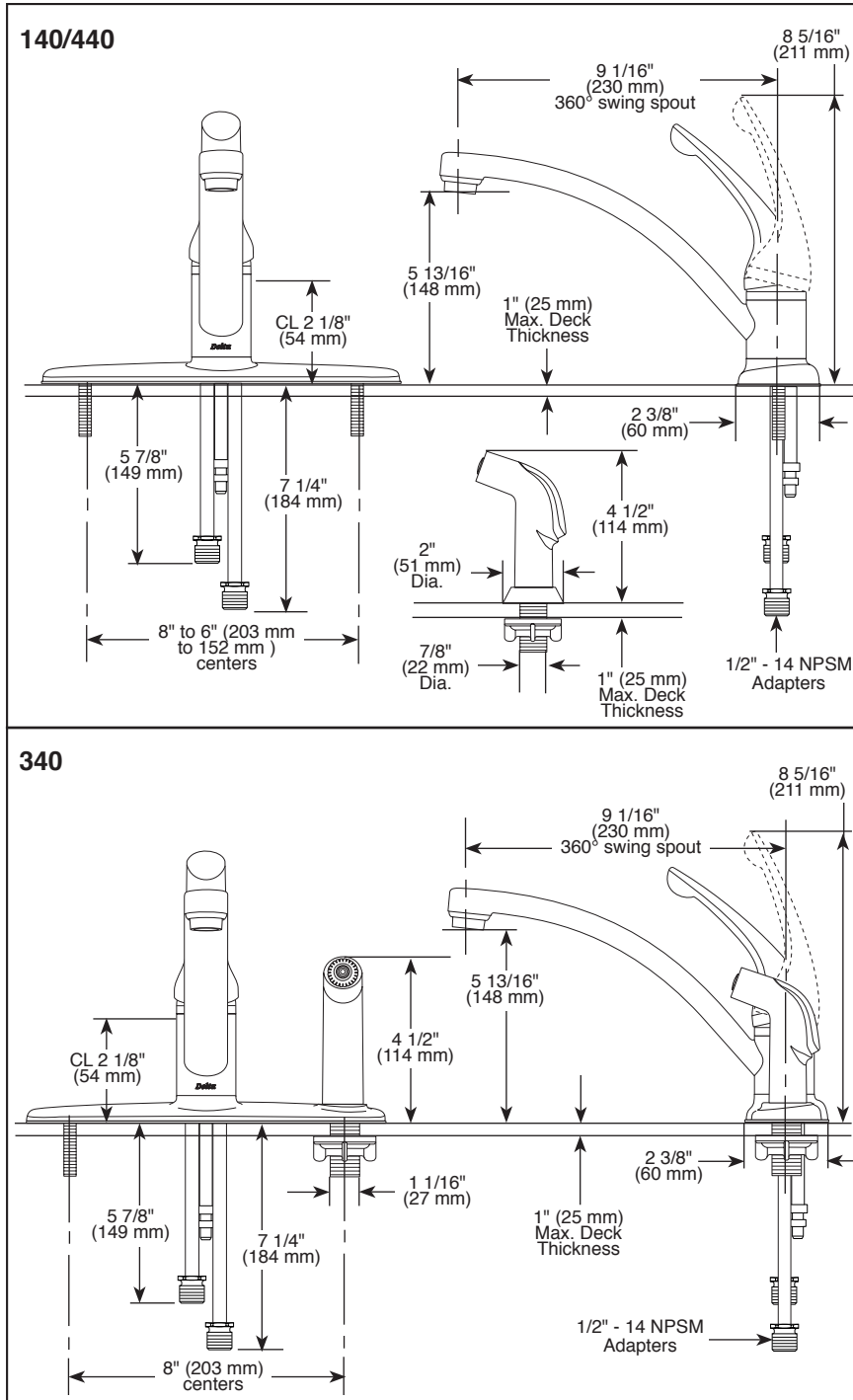


## KITCHEN FAUCETS

- Signature® Series
- Single Handle Deck Mount
- 3 and 4 Hole Sink Applications
- Quick Snap® Vegetable Sprayer Hose Installation on Models 340 and 440 Series

Submitted Model No.: \_\_\_\_\_

Specific Features: \_\_\_\_\_



### STANDARD SPECIFICATIONS:

- Solid brass fabricated body.
- 9 1/16" (230 mm) long spout swings 360°.
- Lever handle shall return to neutral position when faucet is turned off.
- Red and blue button on handle.
- Control mechanism shall be of the rotating stainless steel ball type with replaceable non-metallic seats operating in stainless steel lined sockets.
- Models 340 and 440 series with spray attachment have anti-siphon device as integral part of valve body.
- Models 140 and 440 series can be field converted from 8" (203 mm) to 6" (152 mm) centers. RP288 mounting bolts available separately.
- Quick Snap® vegetable sprayer hose with matching finish sprayhead on models 340 and 440 series - 45" (1143mm) long hose.
- 3/8" O.D. straight, staggered copper supply tubes - 5 7/8" (149 mm) and 7 1/4" (184 mm) long supplied with 1/2"-14 NPSM adapters.
- Maximum 1.80 gpm @ 60 psi, 6.8 L/min @ 414 kPa

### WARRANTY

- Lifetime limited warranty on parts (other than electronic parts and batteries) and finishes: or, for commercial users, for 5 years from date of purchase.
- 5 year limited warranty on electronic parts (other than batteries); or, for commercial users, for 1 year from the date of purchase. No warranty is provided on batteries.

### COMPLIES WITH:

- ASME A112.18.1 / CSA B125.1
-  Indicates ADA compliance to ICC/ANSI A117.1



Delta reserves the right (1) to make changes in specifications and materials, and (2) to change or discontinue models, both without notice or obligation. Dimensions are for reference only. See full-line price book or [www.deltafaucet.com](http://www.deltafaucet.com) for finish options and product availability.  
DSP-K-140 Rev. F

55 E. 111th Street, Indianapolis, Indiana 46280  
350 South Edgeware Road, St. Thomas, ON N5P 4L1  
© 2015 Masco Corporation of Indiana