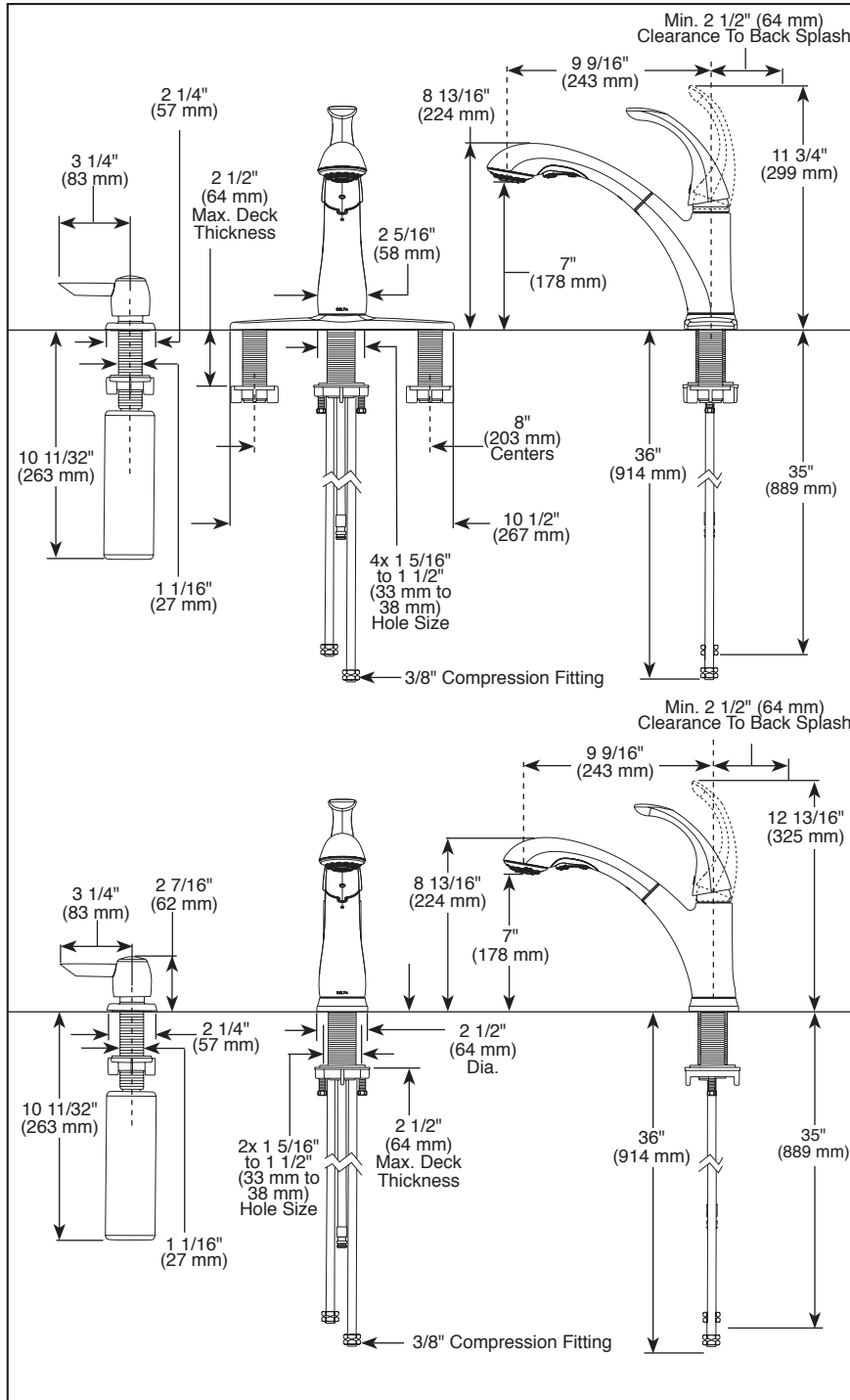


16736-▲SD-DST

Submitted Model No.:

Specific Features:



▲ Designate Proper Finish Suffix

Delta reserves the right (1) to make changes in specifications and materials, and (2) to change or discontinue models, both without notice or obligation. Dimensions are for reference only. See current full-line price book or www.deltafaucet.com for finish options and product availability.

DSP-K-16736-SD-DST Rev. B



KITCHEN FAUCETS

- Pixa® Series
- Single Handle Pull-Out

FEATURES:

- DIAMOND Seal® Technology
- Touch-Clean® Sprayhead

STANDARD SPECIFICATIONS:

- Maximum 1.80 gpm @ 60 psi, 6.80 L/min @ 414 kPa
- One, two, three, or four hole mount (escutcheon optional, included)
- Diamond coated ceramic cartridge
- 3/8" O.D. straight, staggered PEX supply lines
- Spout is connected to valve body with a 53" (1346 mm) long hose
- Spout rotates 120°
- Red/blue graphics on handle button to indicate hot/cold temperature
- Two function wand; Aerated stream or spray
- Integral double check valves in spout

WARRANTY

- Lifetime limited warranty on parts (other than electronic parts and batteries) and finishes: or, for commercial users, for 5 years from date of purchase.
- 5 year limited warranty on electronic parts (other than batteries); or, for commercial users, for 1 year from the date of purchase. No warranty is provided on batteries.

COMPLIES WITH:

- ASME A112.18.1 / CSA B125.1
- ASME A112.18.6

 Indicates compliance to ICC/ANSI A117.1

- Verified compliant with .25% weighted average Pb content regulations.



55 E. 111th Street, Indianapolis, Indiana 46280
350 South Edgeware Road, St. Thomas, ON N5P 4L1
© 2016 Masco Corporation of Indiana