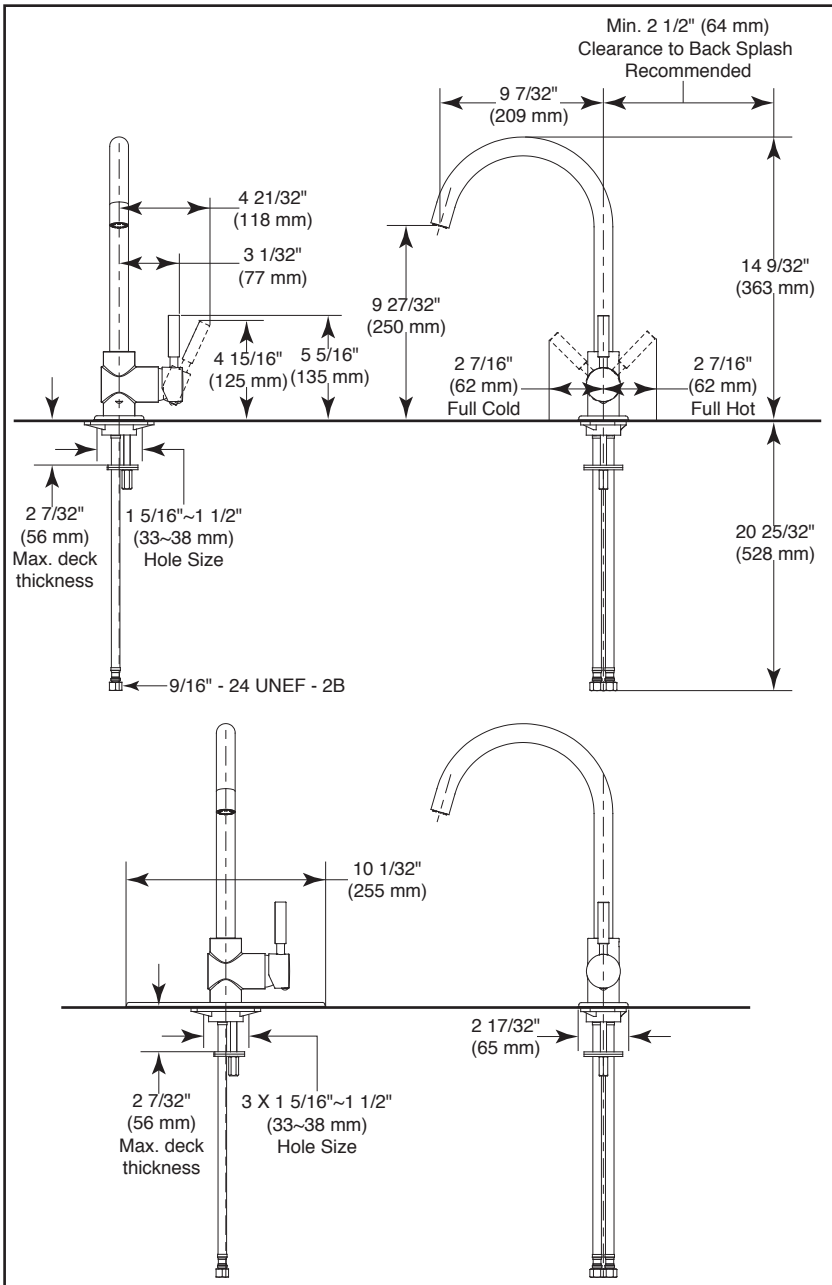


Submitted Model No.: _____
 Specific Features: _____



▲ Designate proper finish suffix

Delta reserves the right (1) to make changes in specifications and materials, and (2) to change or discontinue models, both without notice or obligation. Dimensions are for reference only. See full-line price book or www.specselect.com for finish options and product availability.

DSP-K-184 Rev. B



KITCHEN FAUCETS

- Tommy Collection
- Single Handle Deck Mount
- 1 or 3 Hole sinks

STANDARD SPECIFICATIONS

- Solid brass fabricated body.
- Single handle kitchen faucet for exposed mounting on 1 or 3 hole sinks.
- 8" centres with optional 10" long escutcheon.
- 14 9/32" (363 mm) high, 9 7/32" (209 mm) long spout nestled in a metal hub, swings 120°.
- Ceramic cartridge with high temperature rotational limit stop.
- ADA compliant.

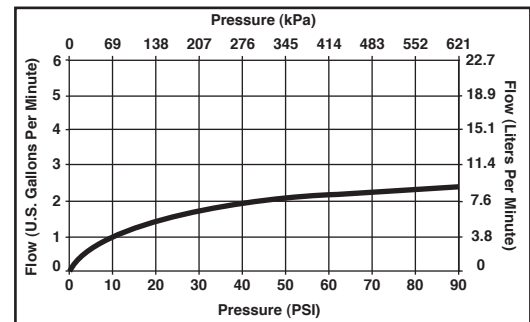
WARRANTY

- Lifetime Faucet and Finish Limited Warranty to the original consumer purchaser to be free from defects in material and workmanship.
- 5 Year Limited Warranty for usage in all industrial, commercial and business applications.



COMPLIES WITH

- ASME A112.18.1 / CSA B125.1
- Indicates compliance to ICC / ANSI A117.1
- NSF 61



395 Matheson Blvd. E., Mississauga, Ontario, Canada L4Z 2H2
 © 2010 Masco Canada