

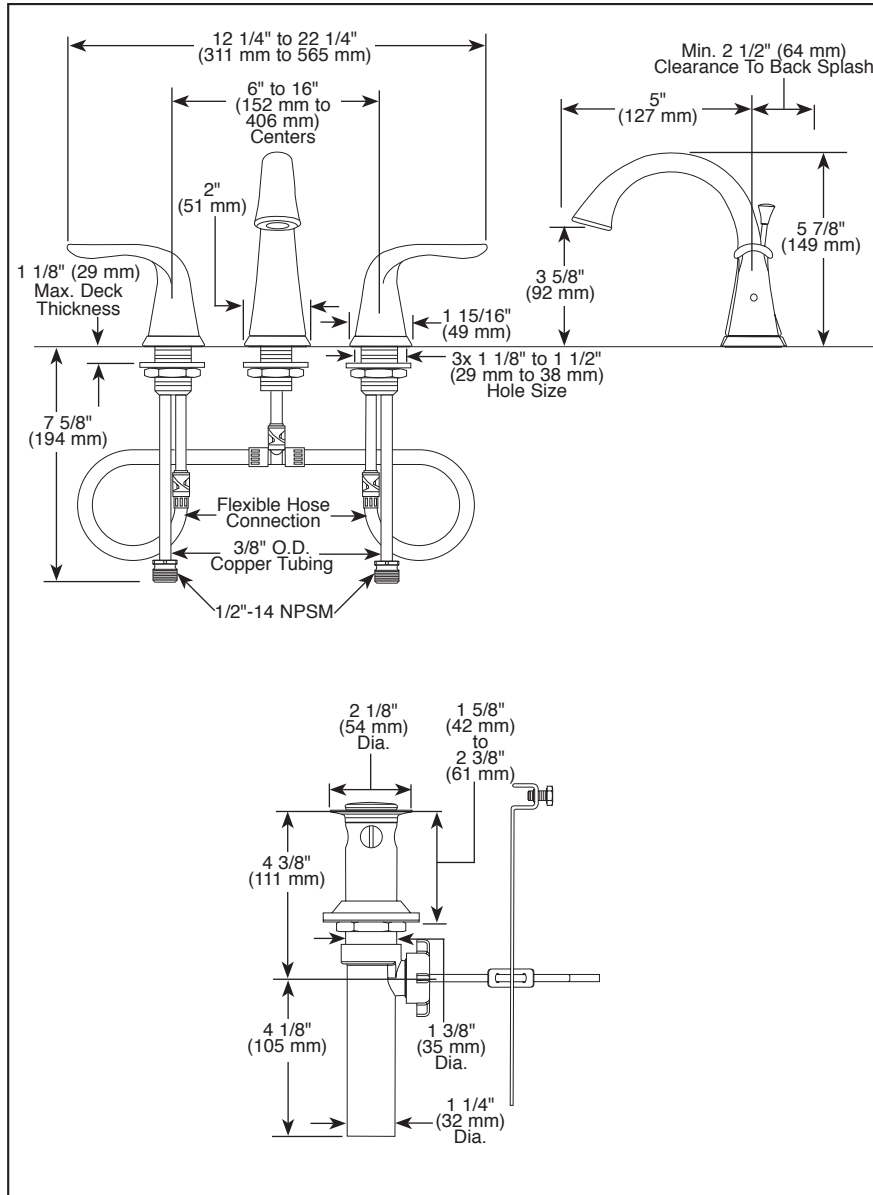


3538LF▲



Submitted Model No.: _____

Specific Features: _____



▲ Designate proper finish suffix



LAVATORY FAUCETS

- Lahara® Bath Collection
- Two Handle Widespread Deck Mount
- 3 Hole Sink Applications
- 6"-16" Centers
- Quick-Snap® Installation

STANDARD SPECIFICATIONS:

- Solid brass fabricated end valve.
- Widespread - 6" (152 mm) to 16" (406 mm) centers.
- 5" (127 mm) long, 5 7/8" (149 mm) high, rigid spout.
- Quick-Snap® installation
- 1/4 turn stops.
- Hot and cold stems are interchangeable.
- Control mechanism is a rotating cylinder with stainless steel plate and 90° rotation, with replaceable non-metallic seats operating in stainless steel lined sockets.
- 3/8" O.D. copper supply tubes with 1/2"-14 NPSM adapters.
- Models include polypropylene pop-up type drain fitting with plated metal flange and stopper cap.
- Maximum flow rate 1.5 gpm @ 60 PSI.
- Note: Standard mounting deck thickness can be extended 1" with RP10612

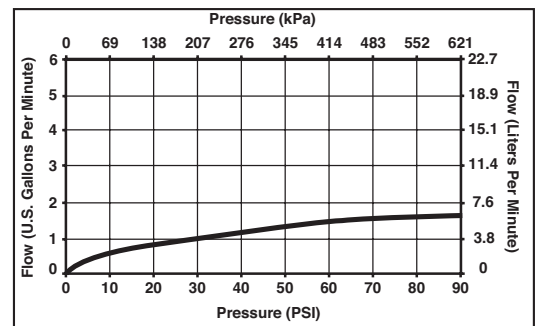
WARRANTY

- Lifetime limited warranty on parts (other than electronic parts and batteries) and finishes: or, for commercial users, for 5 years from date of purchase.
- 5 year limited warranty on electronic parts (other than batteries); or, for commercial users, for 1 year from the date of purchase. No warranty is provided on batteries.



COMPLETE VALVE COMPLIES WITH:

- ASME A112.18.1 / CSA B125.1
- ASME A112.18.2 / CSA B125.2
- Indicates compliance to ICC/ANSI A117.1
- EPA WaterSense®
- Verified compliant with .25% weighted average Pb content regulations.



55 E. 111th Street, Indianapolis, Indiana 46280
 350 South Edgeware Road, St. Thomas, ON N5P 4L1
 © 2014 Masco Corporation of Indiana

Delta reserves the right (1) to make changes in specifications and materials, and (2) to change or discontinue models, both without notice or obligation. Dimensions are for reference only. See current full-line price book or www.deltafaucet.com for finish options and product availability.

DSP-L-3538LF Rev. A