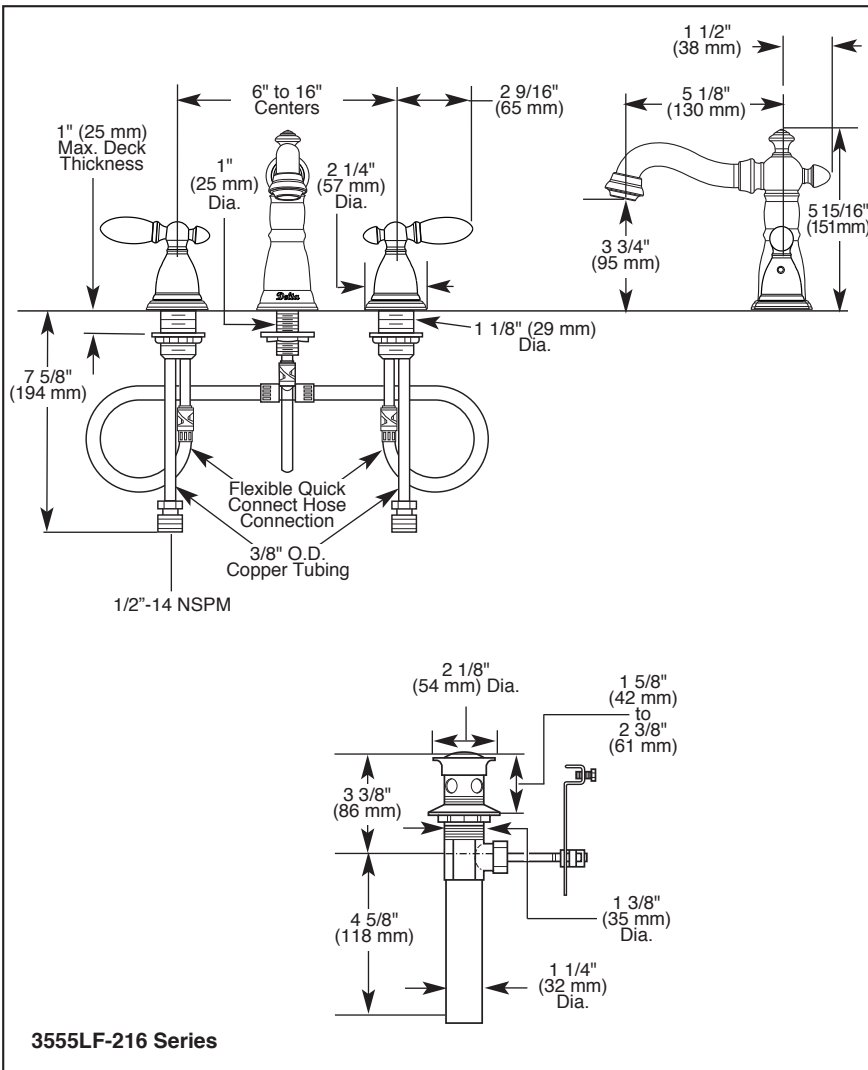


3555LF-216



Submitted Model No.: _____

Specific Features: _____



3555LF-216 Series



LAVATORY FAUCETS

- Victorian® Bath Collection
- Two Handle Widespread Deck Mount

STANDARD SPECIFICATIONS:

- Three hole mount
- Solid brass fabricated end valve and spout bodies
- Max. 1.20 gpm @ 60 psi, 4.54 L/min @ 414 kPa
- Quick Snap® Installation
- 1/4 turn handle stops
- Control mechanism is the rotating cylinder type with stainless steel plate and 180° rotation, with replaceable non-metallic seats operating in stainless steel lined sockets.
- Models have metal drain with pop-up type fitting with plated flange and stopper

WARRANTY

- Lifetime limited warranty on parts (other than electronic parts and batteries) and finishes: or, for commercial users, for 5 years from date of purchase.
- 5 year limited warranty on electronic parts (other than batteries); or, for commercial users, for 1 year from the date of purchase. No warranty is provided on batteries.



COMPLIES WITH:

- ASME A112.18.1 / CSA B125.1
- ASME A112.18.2 / CSA B125.2
- Indicates compliance to ICC/ANSI A117.1 Verified to <0.25% Pb average wetted surface regulations.
- EPA WaterSense®

