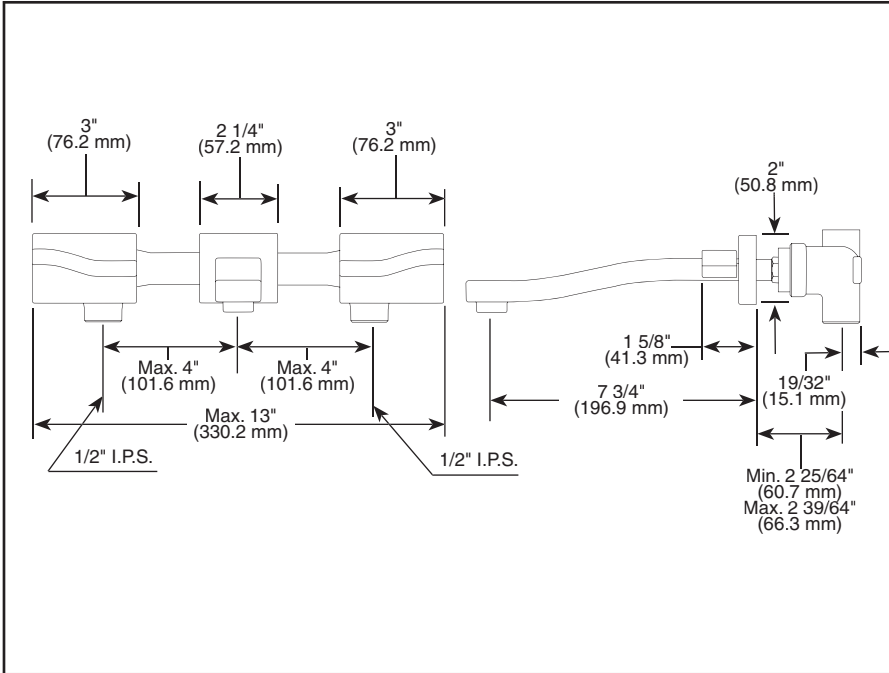


Submitted Model No.: \_\_\_\_\_

Specific Features: \_\_\_\_\_



## LAVATORY FAUCETS

- MGM Mandarin Towers™ Two Handle Wall Mounted Lavatory
- 3 Hole Applications
- 8" Centerset
- Temperature and Volume Controlled With Handles
- 7 3/4" Solid Metal Spout

### STANDARD SPECIFICATIONS:

- Two handle lavatory faucet for concealed mounting on 3 hole applications.
- 7 3/4" solid metal spout.
- Control mechanism shall be of the rotating ceramic cylinder type with 90° (1/4 turn) rotation.
- 8" center, 4" distance between holes.
- 1 1/2" recommended hole size.
- Roughing in dimensions: 2 25/64" to 2 39/64".
- 1/2" I.P.S. inlets.
- For push button drain option, order; RP6949570\* with overflow holes or RP6949572\* less overflow holes. \*Indicates surface suffix.

### WARRANTY

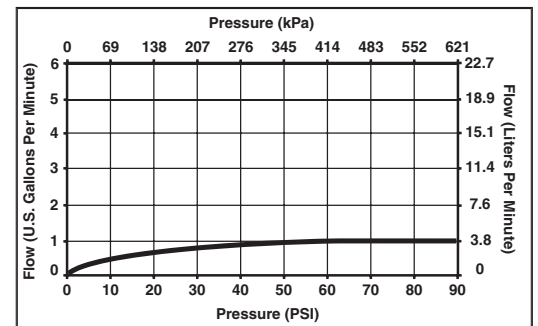
- Lifetime Faucet and Finish Limited Warranty to the original consumer purchaser to be free from defects in material and workmanship.
- 5 Year Limited Warranty for usage in all industrial, commercial and business applications.



### COMPLIES WITH:

- ANSI/ASME A112.18.1 / CSA B125.1
- CSA Certified
- ICC/ANSI A117.1/ADA
- IAPMO Listed

Indicates ADA compliance to ICC/ANSI A117.



55 E. 111th Street, Indianapolis, IN 46280  
 395 Matheson Blvd. E., Mississauga, ON L4Z 2H2  
 © 2007 Masco Corporation of Indiana

Delta reserves the right (1) to make changes in specifications and materials, and (2) to change or discontinue models, both without notice or obligation. Dimensions are for reference only. See current full-line price book or www.specselect.com for finish options and product availability.

DSP-L-3590 REV. A